

**Job Name:** \_\_\_\_\_

**Location:** \_\_\_\_\_

**Engineer:** \_\_\_\_\_

**Submitted to:** \_\_\_\_\_

**Submitted by:** \_\_\_\_\_

**Reference:** \_\_\_\_\_

**Date:** \_\_\_\_\_

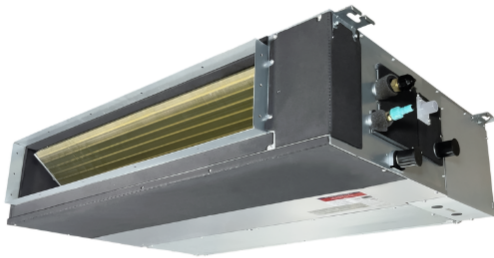
**Approval:** \_\_\_\_\_

**Construction:** \_\_\_\_\_

**Unit #:** \_\_\_\_\_

**Drawing #:** \_\_\_\_\_

## Slim Duct



### KEY FEATURES:

- Flexible Installation
- Compatible with Regular or Hyper Heat Pump
- SmartPort Ready
- Wall Thermostat Included
- Remote Control Included



### SPECIFICATIONS:

Indoor Model			CH-18MDT-W
Power Supply	Rated	V, Ph, Hz	208-230V, 1Ph, 60Hz
Cooling	Rated Capacity	Btu/h	17,000
Heating	Rated Capacity	Btu/h	19,000
Minimum Circuit Ampacity (MCA)		A	3
Max. Fuse		A	15
Indoor Air Flow (Hi/Mi/Lo)		CFM	529.41/450.00/370.59
Indoor Noise Level (Hi/Mi/Lo)		dB(A)	42/38/35.5
External static pressure (SlimDuct/AHU only)		in. WG	0.3
Drainage water pipe diameter		inch	1"
Diameter of refrigerant pipe (Liquid/Gas Side)		Inch	1/4" - 1/2"
Dehumidification		Pnt/H	3.74
Communication wiring			14AWG*4
Indoor	Dimension (W×D×H)	inch	34.65x26.54x8.27
	Packing (W×D×H)	inch	42.13x28.54x11.02
	Net/Gross Weight	lbs.	55.34/67.02

